

LifTILTruk A



One-Person Lifter & Manual Pourer for Up to 180 lbs Lifting Capacity



Economical Mobile Bowl/Container Lifter

The LifTILTruk Model A is Savage Bro's most economical and compact lifter and pourer. Its battery-powered design and hand-cranked tilt makes it a precise and nimble lifter. Model A has a standard base width and height, perfect for handling bowls and containers of up to 180 lbs of total weight with pouring height reaching up to 46.5 inches (work-table height).

The LifTILTruk Model A also has safety features making it a perfect partner for pouring and lifting confectionery and bakery products, including candy mixtures, gummy mixtures, fudge batter, cake batter, and more!

KEY FEATURES

- 1 Hand-cranked geared tilt controls provide operators more control and precision when pouring
- 2 Small footprint to fit through 36-inch doorways
- 3 Pours onto most cooling tables of any size
- 4 Push-button 12-volt DC powered lift
- 5 On-board battery and charger, plugs into standard outlet for recharging
- 6 Locking casters for extra safety

PRODUCT SPECIFICATIONS

Dimensions	28.9" base width x 69.8" height x 37.2" depth
Body	Heavy-duty powder-coated steel
Lifting Capacity	Up to 180 lbs
Pouring Height	Up to 46.5" (for 20" diameter x 11" deep kettle) Up to 46.5" (for 20" diameter x 16" deep kettle) Up to 41.5" (for 24" diameter x 16 3/4" deep kettle) Up to 44.0" (for 80 qt bowl) Up to 40.0" (for 140 qt bowl)
Battery	12VDC / Type AGM / 40 Amp-Hour
On-Board AC Battery Charger	1-Phase / 100-240 VAC / 50-60 Hz 2 Amps
Weight of Unit	237 lbs
Warranty	1 year limited product warranty



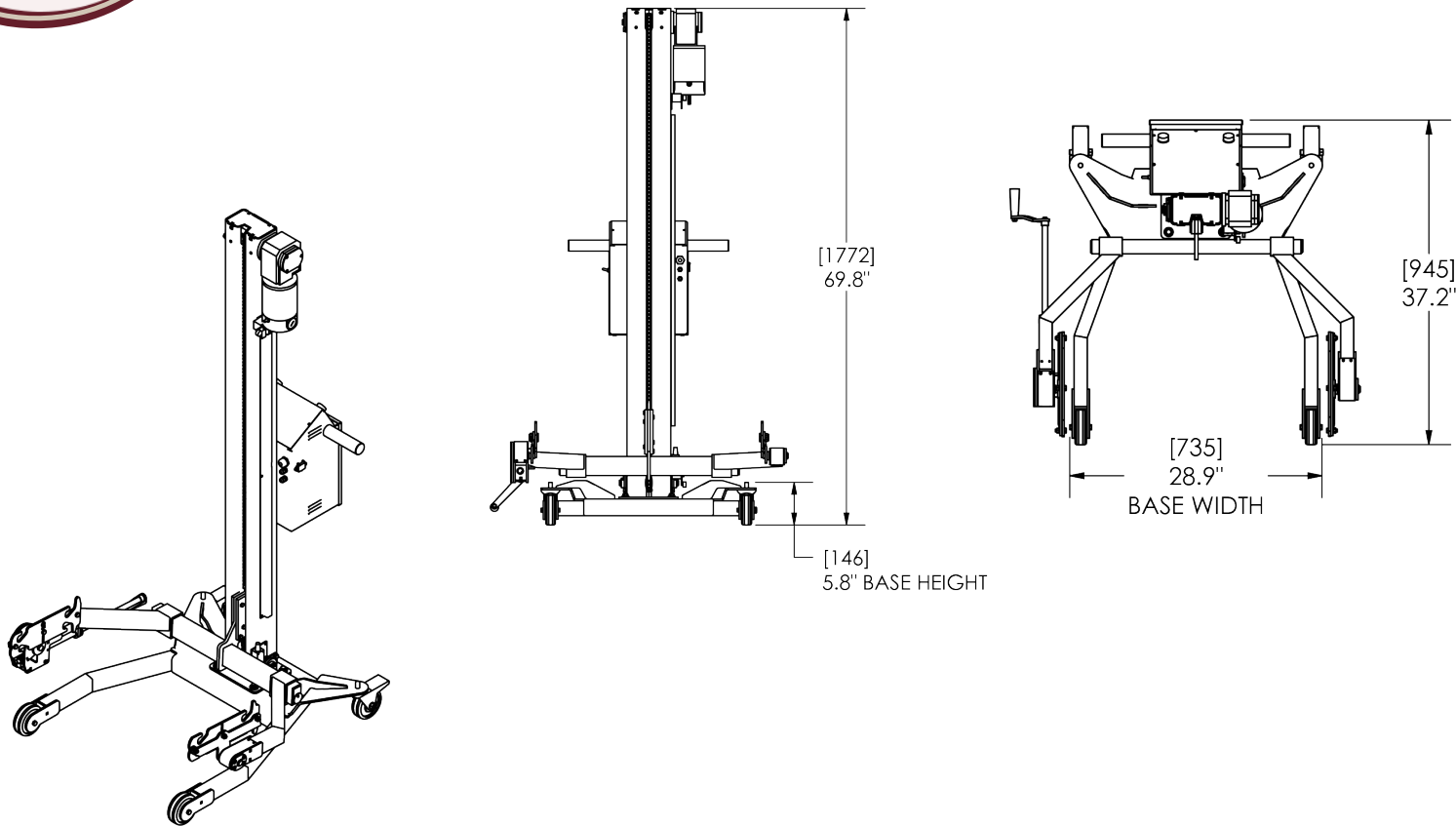
OPTIONAL

ACCESSORIES

- Copper Kettle on Mobile Daily
- Savage Kettles

MADE
IN USA

DIMENSIONAL
DRAWINGS



ACCESSORIES : Not included in the LifTILTruk A Pricing

OPTIONAL ADD-ONS



Kettle on Mobile Dolly



Savage Kettles